



**1990**  
INSTITUTE

# **CHINA NOW Seminar**

## **Teachers Workshop**

**July 26-27, 2019**

**101 Twin Dolphin Drive, Redwood City, California**

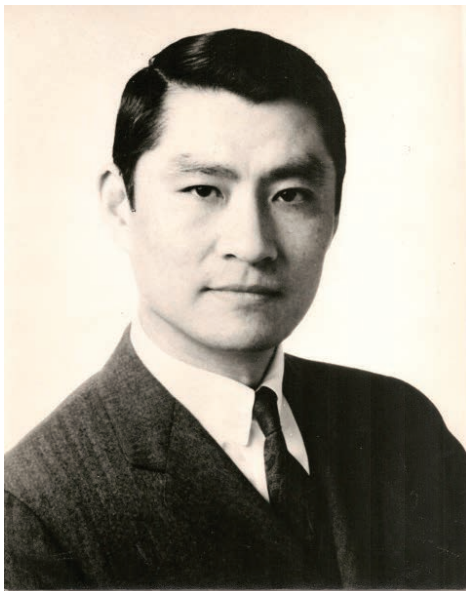
# ***China on the Move***

Cosponsored by the University of Southern California US-China Institute  
In partnership with the San Mateo County Office of Education

# In Memoriam

## Dr. Richard Hsu 1925 - 2019

Dr. F. Richard Hsu was President of the J. T. Tai & Co. Foundation, Inc. and Chairman of the Board of the J. T. Tai & Co. Inc. and a noted scholar and philanthropist.



Dr. Hsu was a beloved and generous supporter of 1990 Institute for many years. His philanthropy was instrumental in funding all of 1990 Institute's initiatives, especially our key program, the CHINA NOW Seminar and Teachers Workshop. He appreciated the excellence of our programming and the high-caliber dedication of our Board and staff, increasing his support year after year.

Dr. Hsu was a Trustee Emeritus at the Thunderbird School of Global Management, a Trustee of the Eisenhower Fellowships and a member of the Advisory Council of the Johns Hopkins University Nanjing Center. From 1969-1983, he served as President of the China Institute of America. During this period, he also served as Vice Chairman of the National Advisory Council on Bilingual Education, Trustee of the United Board for Christian Higher Education in Asia and was appointed by President Gerald Ford and reappointed by President Jimmy Carter to the Commission on Presidential Scholars.

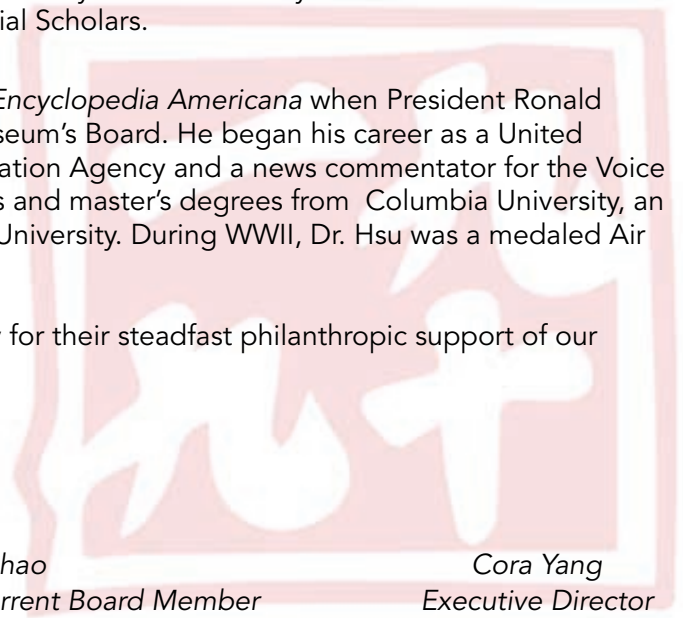
In 1983, Dr. Hsu was the International Editor of the *Encyclopedia Americana* when President Ronald Reagan appointed him to serve on the National Museum's Board. He began his career as a United Nations Correspondent for the United States Information Agency and a news commentator for the Voice of America. He graduated cum laude with bachelor's and master's degrees from Columbia University, an LLD from Plano University and a DHL from Catholic University. During WWII, Dr. Hsu was a medaled Air Force P-51 fighter pilot.

1990 Institute sincerely thanks Dr. Hsu and his family for their steadfast philanthropic support of our programs and mission over the years.

Richard Chong  
Board Chair

Daniel Chao  
Former Board Chair & Current Board Member

Cora Yang  
Executive Director



## Dear Participants & Educators,

Welcome to 1990 Institute's CHINA NOW Seminar and Teachers Workshop. The theme for our seventh annual event is *China on the Move*, which explores the latest trends in economics, technology, the environment, health and the arts. Understanding the complex issues in US-China relations is more critical now than ever. We are proud to present a balanced view of contemporary China to help teachers as well as the general public gain a more nuanced understanding of the multifaceted US-China relationship.

CHINA NOW is designed to empower middle and high school teachers with knowledge and strategies to incorporate content about contemporary China into their curricula. Teachers can receive a stipend as well as Continuing Education Units from San Francisco State University. For more information go to [teachers.1990institute.org](http://teachers.1990institute.org).

In addition, the general public can join CHINA NOW sessions through our livestream – everyone can watch China specialists sharing their expertise in real time or any time through the posted recordings on our website, [1990institute.org](http://1990institute.org).

From education arises understanding. From understanding springs empathy. From empathy, we can create a world in which citizens of the US and China view each other with trust and openness.

Sincerely,



Cora Yang  
Executive Director

## Major Partners & Supporters



# Friday, July 26

Time	Session	Speakers
8:00 - 8:30 am	Registration & Breakfast	
8:30 - 9:00 am	Welcome & Introduction	<i>Rick Chong, Chair Cora Yang, Executive Director Ruby Ming, Director of Strategy</i>
9:00 - 10:15 am	Recalibrating US-China Relations	<i>Clayton Dube, USC</i>
10:15 - 10:30 am	Break	
10:30 - 11:45 am	China, Globalization and the Environment	<i>Mark Henderson, Mills College</i>
11:45 - 12:00 pm	College Essay Contest Awards	<i>Cora Yang, Executive Director</i>
12:00 - 1:00 pm	Lunch & Networking	
1:00 - 2:15 pm	Changzhou Worker Wellness Project: A Participatory Approach to Support Migrant Workers	<i>Linda Neuhauser, UC Berkeley Eve Wen-Jing Lee, UC Berkeley</i>
2:15 - 2:30 pm	Break	
2:30 - 4:00 pm	Instructional Practice Part 1	<i>Devin Hess, UC Berkeley</i>
4:00 - 5:15 pm	Personal Perspectives on China – Yesterday and Today	<i>Frank Dikötter, Stanford University Clayton Dube, USC</i>
5:15 - 5:30 pm	Wrap-up	<i>Clayton Dube, USC</i>



Time	Session	Speakers
8:00 - 8:30 am	Registration & Breakfast	
8:30 - 9:00 am	Review of Day 1	<i>Clayton Dube, USC</i>
9:00 - 10:15 am	Building Healthcare Partnerships in China	<i>Dr. Samuel So, Stanford University</i>
10:15 - 10:30 am	Break	
10:30 - 11:45 am	The Rise of China in Technology Development	<i>Francis Lee, Synaptics</i>
11:45 - 12:45 pm	Lunch & Networking	
12:45 - 1:45 pm	US-China Trade and Business Relations	<i>Darlene Chiu Bryant, GlobalSF</i>
1:45 - 2:00 pm	Break	
2:00 - 3:00 pm	Art in Contemporary China: Artists, Markets and Global Circulations	<i>Ellen C. Huang, Stanford University</i>
3:00 - 3:15 pm	Break	
3:15 - 4:45 pm	Instructional Practice Part 2	<i>Devin Hess, UC Berkeley</i>
4:45 - 5:00 pm	Conclusion	<i>Clayton Dube, USC</i>

Friday, July 26

## Recalibrating US-China Relations

China has experienced rapid growth in many sectors in recent years. This growth has affected and will affect the role that China plays in the world, including its relationship with the United States.



**Clayton Dube** is Executive Director of the **University of Southern California US-China Institute**. Trained as a historian, he first lived in China in 1982 and has since returned to China many times to carry out fieldwork on economic development, lead study tours and lecture at conferences. He has produced several media projects related to China, including two student-driven web publications and two documentary films. He is recognized for his many outstanding contributions to research and education about China, has won teaching awards at three universities and serves as a director of the National Consortium for Teaching about Asia. He is returning for the third time as our seminar's moderator.

## China, Globalization and the Environment

China's transformation of the past 30 years has been fueled largely by exports. Today, China's economic plans include catching up with the capabilities of the US and solidifying its position as a world economic leader. This presentation will map the chains of production and consumption in the global economic system, look at how the choices of American consumers affect the people and the environment in China and beyond, and discuss how individual and policy actions can promote environmental conservation and combat climate change.



**Mark Henderson** is Associate Professor and Director of the Public Policy Program at **Mills College** in Oakland, California where he teaches environmental policy and planning. His research focuses on environmental and social issues in the US and China, including urbanization and land use planning, global climate change and policy applications of geographic information science (GIS). He has worked on projects for the US Environmental Protection Agency and has been an honorary guest professor at Lanzhou University, Gansu, China and a Visiting Scholar at the Center for Geographic Analysis at Harvard University.

## Changzhou Worker Wellness Project: A Participatory Approach to Support Migrant Workers

Over 250 million "migrant" workers in China moved from rural areas to take jobs in urban economic zones, primarily in factories, and experienced many difficult health and social issues. The Changzhou Worker Wellness Project has been using participatory design approaches to engage workers, factory managers, government officials, and health and social service providers to identify problems and practical solutions to support workers' wellness and improve economic success. This award-winning model is operating in 28 factories and has the potential to be adapted to other places.



**Linda Neuhauser** is Clinical Professor of Community Health and Human Development at the **University of California, Berkeley School of Public Health** and the co-principal investigator at its Health Research for Action. Her research and teaching are focused on transdisciplinary models to improve health policies. She creates programs that are tailored to people's literacy levels, cultures, access, functional needs and social contexts. She is an advisor to the US Department of Health and Human Services, the Centers for Disease Control and Prevention, the Food and Drug Administration and the National Academy of Sciences.



**Eve Wen-Jing Lee** is Special Advisor for Asian Health Programs at Health Research for Action at the **University of California, Berkeley School of Public Health**. She was trained as a health educator and has been working on women's health and rights issues for three decades. She is a senior advisor for Pathfinder International and was a grantmaker for the Ford Foundation's Beijing office. Prior to the Ford Foundation, she was Vice President of the Public Media Center, a public interest communication and technical assistance agency based in San Francisco, and a health educator and counselor in the Women Health Clinic at San Francisco General Hospital.

## Instructional Practice Part 1: Literacy Strategies for Exploring Modern China

This two-part workshop will guide teachers through the design of a lesson activity that supports students' comprehension of challenging content about contemporary China. The first part will provide a hands-on introduction to a strategy called *Headings and Highlights*.



**Devin Hess** is the Program Coordinator and Director of Technology Integration for the **University of California, Berkeley History-Social Science Project (UCBHSSP)** where he develops and leads professional development focused on developing students' academic literacy and historical thinking skills. He also leads UCBHSSP's technology initiative, transitioning paper-based literacy strategies to web-based applications and determining which tech applications are most useful for driving discipline-specific student learning. He helped launch and continues to support digital storytelling projects as part of ongoing rural development and education programs in India and Guatemala.

## Personal Perspectives on China – Yesterday and Today Frank Dikötter in Conversation with Clayton Dube



**Frank Dikötter** is chair professor of humanities at the **University of Hong Kong** and senior fellow at the **Hooover Institution at Stanford University**. He is the author of a dozen books that have changed the ways historians view modern China, including the classic *The Discourse of Race in Modern China* and *China before Mao: The Age of Openness*. His People's Trilogy uses newly opened files from the Chinese Communist Party's own archives to document the impact of communism on the lives of ordinary people under Mao. The conclusion of the trilogy, *The Cultural Revolution: A People's History, 1962-1976*, was short-listed for the PEN Hessel-Tiltman Prize in 2017.

Saturday, July 27

## Building Healthcare Partnerships in China

The Asian Liver Center at Stanford University and in Beijing (Peking ALC) has built partnerships with local governments, public health institutions, universities and other organizations to establish unifying connections that can more effectively eliminate hepatitis B transmission and increase access to recommended treatment. Peking ALC creates and carries out public projects that increase awareness and dispel misconceptions. These projects are rooted in the C.A.R.E. approach: Collaboration, Advocacy, Raising awareness and communication and Education.



**Dr. Samuel So** is recognized worldwide and has received dozens of awards for his expertise in chronic hepatitis B and primary liver cancer prevention, research, treatment and health policy. He is Professor of Surgery at **Stanford University School of Medicine** and is the founder of the multidisciplinary liver cancer program at the Stanford Cancer Center and the founder and executive director of the **Asian Liver Center** at Stanford and at Peking University (Peking ALC). He has been an adviser for the Food and Drug Administration and World Health Organization and has received awards from dozens of organizations, including the Centers for Disease Control and Prevention and Asia Society Northern California.

## The Rise of China in Technology Development

The US is often considered the most advanced nation. This presentation will discuss whether the US is really ahead of China in the technology sector and the factors that promote the development of technology. From 5G to artificial intelligence, Internet access to robotics, this presentation will explore the implications of technology on our future.



**Francis Lee** is on the Board of **Synaptics**, a leading supplier of human interface solutions, and a director at Adesto Technologies, a provider of innovative semiconductors and embedded systems for the Internet of things (IoT). He was previously CEO and President of Synaptics and the General Manager of NSM in Hong Kong. He held a variety of executive positions with National Semiconductor, including Vice President of Communications and Computing Group and Vice President of Quality and Reliability. He is a regular guest lecturer on leadership skills and innovative thinking.

## US-China Trade and Business Relations

Business relations between the US and China seem more volatile than ever. This presentation discusses the impact of "trade wars" and tariffs, including the effect on everyday consumers.



**Darlene Chiu Bryant** is the founder and Executive Director of **GlobalSF**, a nonprofit that supports San Francisco's economic development efforts with global partners. Formerly the Executive Director of ChinaSF, she oversaw efforts that brought in over \$5 billion in foreign direct investment to the Bay Area. She has had a diverse career in international trade and public affairs in both the public and private sectors. Recognized as one of the most influential women in business by the San Francisco Business Times, she is a current board member of the Angel Island Immigration Station Foundation and a founding board member of the Asian Pacific American Leadership Foundation.



## Art in Contemporary China: Artists, Markets and Global Circulations

Over the last 20 years, rapid changes in the production, consumption and circulation of art have taken place in globalized China. From participation in international art markets to the state-sponsored global exhibition fairs, art in China reflects and shapes social economic trends in the 21st century. These developments will be situated in relation to China's changing economy and position in the world political sphere by focusing on state involvement, the increase of art fairs in China and the dynamics of collecting.



**Ellen C. Huang** is a historian of art, technology and material culture. Her research and teaching integrate the applied and natural sciences with the history of ideas and art. She has held teaching positions at the University of California, Berkeley, East China Normal University (Shanghai) and the University of San Francisco. In addition to publishing in catalogues and academic journals, she has organized exhibitions with art collections from the Cantor Arts Center at Stanford University, the Asian Art Museum, the Jingdezhen Ceramic Institute and the National Palace Museum.

## Instructional Practice Part 2: Strategies for Exploring Modern China Through Texts

During the second part of the workshop, teachers will create a lesson activity that uses the *Headings and Highlights* strategy to explore ideas from the seminar sessions that are related to their course curriculum.

These hands-on breakout sessions will be facilitated by:

### Devin Hess

UC Berkeley History-Social Science Project

### Ling-Ling Chern

Miller Middle School, Cupertino  
Chinese Language, History

### Eunjee Kang

Bohannon Middle School, San Lorenzo  
World and US History

### Courtney Caldwell

Aragon High School, San Mateo  
World History, Contemporary World Studies

### Adam Kubey

Jefferson High School, Daly City  
US Government, AP US Government, Economics



Presentations are intended for educational purposes only and do not replace independent professional judgment. Statements of fact and opinions expressed are those of the participants individually and, unless expressly stated to the contrary, are not the opinion or position of 1990 Institute, its cosponsors or its committees.

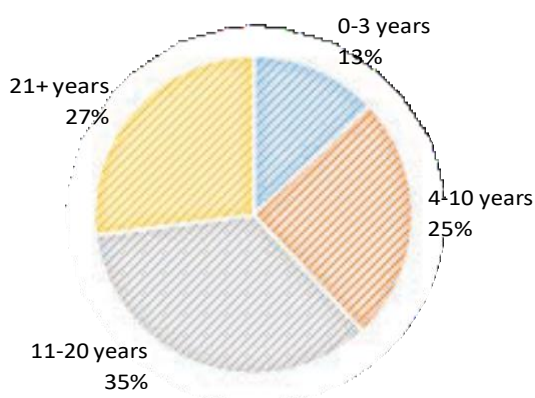
# Impact Data 2018



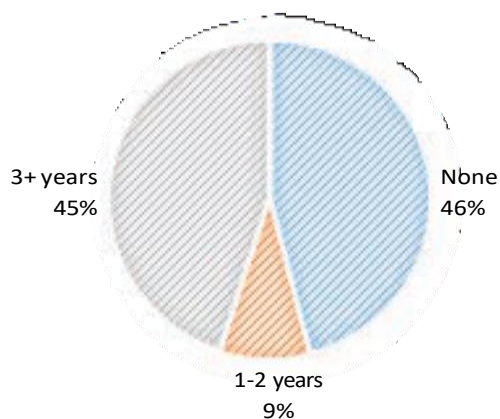
Most CHINA NOW attendees have substantial teaching experience, yet many have little or no experience teaching about modern China.

## TEACHING EXPERIENCE

### Years Teaching

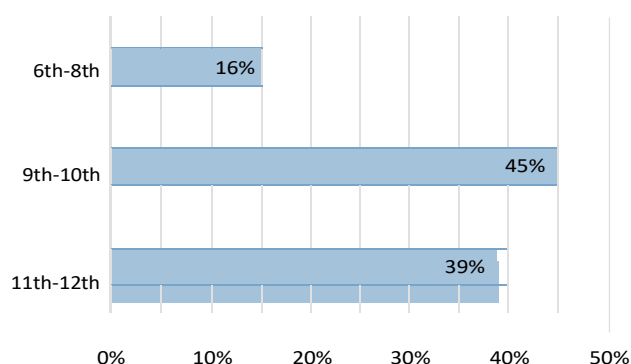


### Experience Teaching Modern China

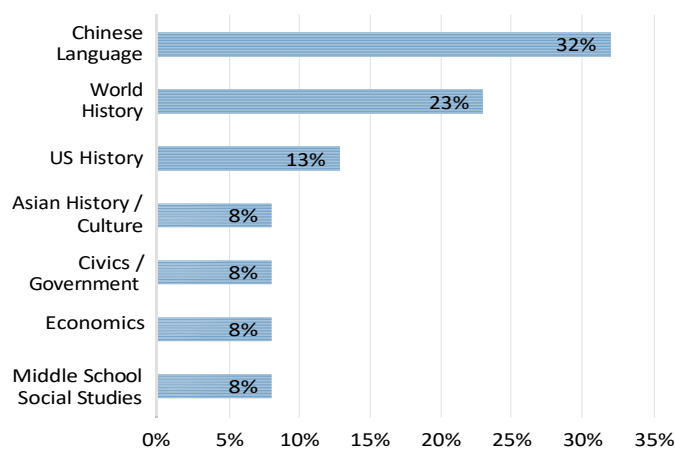


## TEACHING DEMOGRAPHICS

### Grades Taught



### Core Disciplines



In 2018, our CHINA NOW seminar included approximately 60 teachers from Arizona, California, Hawaii, Minnesota, New York and Washington DC and more than 300 viewers who attended from across the US via livestream.

# Testimonials & Acknowledgements

"The speaker sessions were great. I received a lot of very useful information... one of the best organized, best content-driven, most hospitable conferences I've attended."

– Dr. Gretchen Kellough, 'Iolani School, Hawaii



"Every year I am better able to teach about China because the Workshop reinforces the concept that China is not just one large monolith but a multifaceted country with a multifaceted history."

– Alexandra Dove, Mills High School, California

"I teach a senior class on Modern History that includes 2.5 weeks for students to research current issues on China. The workshops help me orient exactly which of the current issues to research each year."

– Michael Borrowman, Social Studies Dean, York School, California, attended 2013-2019



"I love the combination of interesting speakers with time to talk and work with other teachers. I like hearing new insights from the college professors and also the practical relevance of working with teachers to think about how to integrate the information into the classroom."

– Dr. Bonnie Christensen, Punahou School, Hawaii

## **1990 Institute greatly appreciates the contributions of our Teachers Workshop Program Advisors and Board Members:**

Paul Cheng   Alice Chiang   Karen Clancy   May Koo  
Lucille Lee   Sandra Pan   Vicky Wong

## **Special recognition for her generous support of the Lesson Plan Development Program:**

Margaret Liu Collins



## **Thank you to our staff for your tireless efforts and brilliant contributions:**

Maryanne Ballard   Samantha Johnson   Sandra Lioanag   Chris Martin   Ruby Ming  
Stephanie Ming   Diana Yau



## **Educating the next generation of Americans and Chinese to broaden and increase mutual understanding**

In addition to CHINA NOW, 1990 Institute also offers four programs:



Matches classrooms in the US and China to create greater understanding through teacher supervised projects.

***[1990institute.org/penpal-pengyou](http://1990institute.org/penpal-pengyou)***



Sources and showcases authentic, personal stories about Chinese and Americans that are otherwise untold.

***[1990institute.org/whats-in-your-wok](http://1990institute.org/whats-in-your-wok)***



Encourages deep scholarship and research about modern China by US college students.

***[1990institute.org/essay-contest](http://1990institute.org/essay-contest)***



Provides interesting readings about modern China and lively conversations with authors through the US public library system.

***[1990institute.org/book-bonanza](http://1990institute.org/book-bonanza)***

**[www.1990institute.org](http://www.1990institute.org)**

**1990 Institute | PO Box 383 | San Francisco, CA 94104**